

LDAP

LDAP

- <https://segmentfault.com/a/1190000002607140>
- <http://www.itdadao.com/articles/c15a1348510p0.html>
- <http://blog.csdn.net/reblue520/article/details/51804162>

LDAP

- CentOS 7.3 x64
- - OpenLDAP
- OpenLDAP `yum install -y openldap openldap-clients openldap-servers migrationtools`
- - `cp /usr/share/openldap-servers/DB_CONFIG.example /var/lib/ldap/DB_CONFIG`
 - `chown ldap. /var/lib/ldap/DB_CONFIG`
- - `systemctl start slapd`
 - `systemctl enable slapd`
- `netstat -tlnp | grep slapd`

OpenLDAP

- `slappasswd` `{SSHA}YK8qBtlmEpjUiVEPyfmNNDALjBaUTasc`
- - `mkdir /root/my_ldif ; cd /root/my_ldif`
 - `vim chrootpw.ldif`

```
dn:
olcDatabase={0}config,cn=config
changetype: modify
add: olcRootPW
olcRootPW: {SSHA}YK8qBtlmEpjUiVEPyfmNNDALjBaUTasc
```

- `ldapadd -Y EXTERNAL -H ldapi:/// -f chrootpw.ldif`
- `for i in /etc/openldap/schema/*.ldif; do ldapadd -Y EXTERNAL -H ldapi:/// -f $i; done`

domain

- `slappasswd | {SSHA}rNLkIMYKvYhbBjxLzSbjVsJnZSkrfC3w|`
- `cd /root/my_ldif ; vim chdomain.ldif |` `cn dc dc olcRootPW`

```
dn: olcDatabase={1}monitor,cn=config
changetype: modify
replace: olcAccess
olcAccess: {0}to * by dn.base="gidNumber=0+uidNumber=0,cn=peercred,cn=external,cn=auth"
  read by dn.base="cn=gitnavi,dc=youmeek,dc=com" read by * none
```

```
dn: olcDatabase={2}hdb,cn=config
changetype: modify
replace: olcSuffix
olcSuffix: dc=youmeek,dc=com
```

```
dn: olcDatabase={2}hdb,cn=config
changetype: modify
replace: olcRootDN
olcRootDN: cn=gitnavi,dc=youmeek,dc=com
```

```
dn: olcDatabase={2}hdb,cn=config
changetype: modify
add: olcRootPW
olcRootPW: {SSHA}rNLkIMYKvYhbBjxLzSbjVsJnZSkrfC3w
```

```
dn: olcDatabase={2}hdb,cn=config
changetype: modify
add: olcAccess
olcAccess: {0}to attrs=userPassword,shadowLastChange by
  dn="cn=gitnavi,dc=youmeek,dc=com" write by anonymous auth by self write by * none
olcAccess: {1}to dn.base="" by * read
olcAccess: {2}to * by dn="cn=gitnavi,dc=youmeek,dc=com" write by * read
```

- `ldapadd -Y EXTERNAL -H ldapi:/// -f chdomain.ldif |`
- `cd /root/my_ldif ; vim basedomain.ldif |` `cn dc dc`

```
dn: dc=youmeek,dc=com
objectClass: top
```

```

objectClass: dcObject
objectclass: organization
o: youmeek dot Com
dc: youmeek

dn: cn=gitnavi,dc=youmeek,dc=com
objectClass: organizationalRole
cn: gitnavi
description: Directory Manager

dn: ou=People,dc=youmeek,dc=com
objectClass: organizationalUnit
ou: People

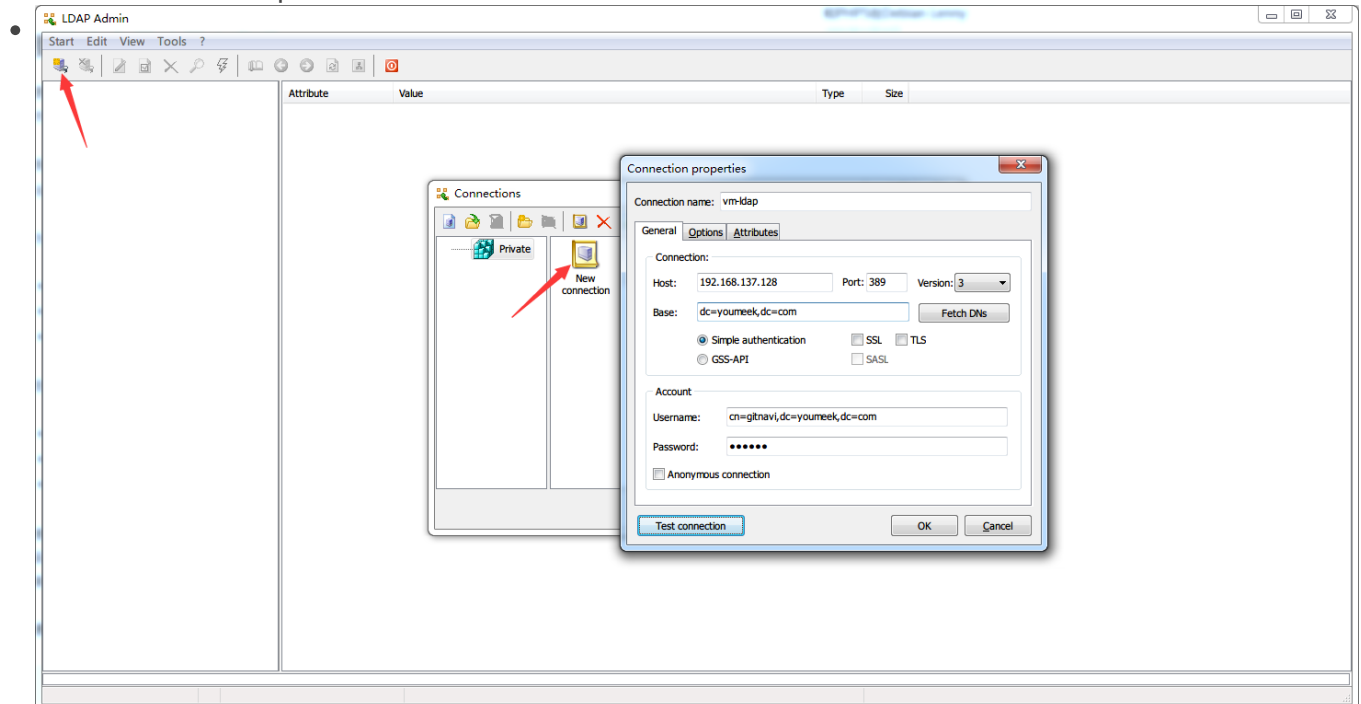
dn: ou=Group,dc=youmeek,dc=com
objectClass: organizationalUnit
ou: Group

```

- `ldapadd -x -D cn=gitnavi,dc=youmeek,dc=com -W -f basedomain.ldif` domain 1111:
- `[]`

- `systemctl restart slapd`
- `ldapsearch -LLL -W -x -D "cn=gitnavi,dc=youmeek,dc=com" -H ldap://localhost -b "dc=youmeek,dc=com"` domain

Ldap Admin



LDAP

- - [LdapAdmin](#)
 - [LdapBrowser](#)
 - [phpLDAPAdmin](#)
 - [Softerra LDAP Administrator](#)
- https://superlc320.gitbooks.io/samba-ldap-centos7/ldap+_centos_7.html
- <http://yhz61010.iteye.com/blog/2352672>
- <https://kyligence.gitbooks.io/kap-manual/zh-cn/security/ldap.cn.html>
- <http://gaowenlong.blog.51cto.com/451336/1887408>

Revision #1

Created 20 March 2020 15:23:20 by

Updated 14 August 2020 06:18:41 by